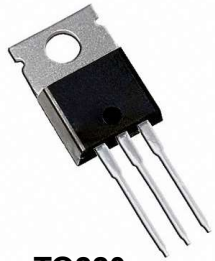


Power Packages TOXXX

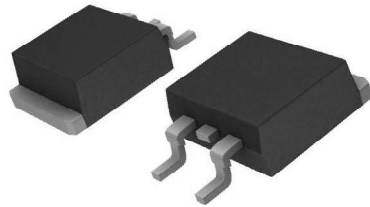


TO220

Suchi Semicon Offers

Dimensions: The standard dimensions include a width of 10.3 mm and a height of around 15.9 mm.

Lead Configuration: 3 leads with heatsink

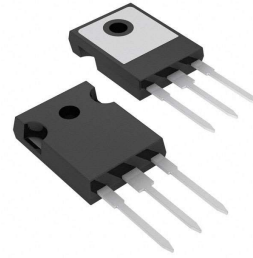


TO263

Suchi Semicon Offers

Dimensions: Width of around 10.16 mm and a height of 4.57 mm

Lead Configuration: 3 leads with surface mounting features



TO247

Suchi Semicon Offers

Dimensions: Width of around 15.8 mm and a height of approximately 20.0 mm

Lead Configuration: 3 leads with large metal tab for efficient heat dissipation. Through-hole technology and secured to a heat sink with a screw or clip



TO-Leadless (TOLL)

Suchi Semicon Offers

Dimensions: The TOLL package typically measures 10x11x2.3 mm

Lead Configuration: Leadless package offering compact design enabling substantial foot print reduction design for surface mount