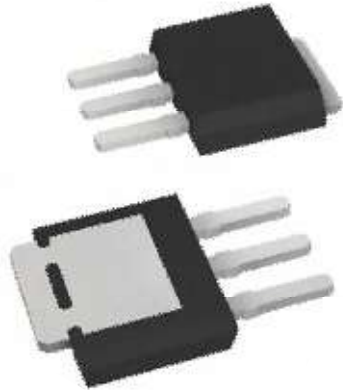


Power Packages

IPAK



IPAK Short Lead

Suchi Semicon Offers

Dimensions: The IPAK SL package typically has a width of around 6.5 mm and a height of approximately 2.3 mm

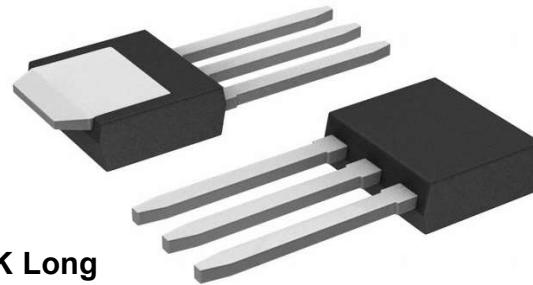
Lead Length: Typically around 1.15 mm to 1.25 mm

Mold Component Feature: Includes a mold component feature between the package body and leads, which helps in maintaining a well-defined standoff height

Standoff Height: The well-defined standoff height ensures effective cleaning and reduces residue between the package and PCB after assembly².

Optimized Leg Width and Length: The legs are optimized for better mechanical stability and reduced stress during thermal cycling

Larger Creepage Distance: The design increases the effective creepage distance between the legs, enhancing reliability².

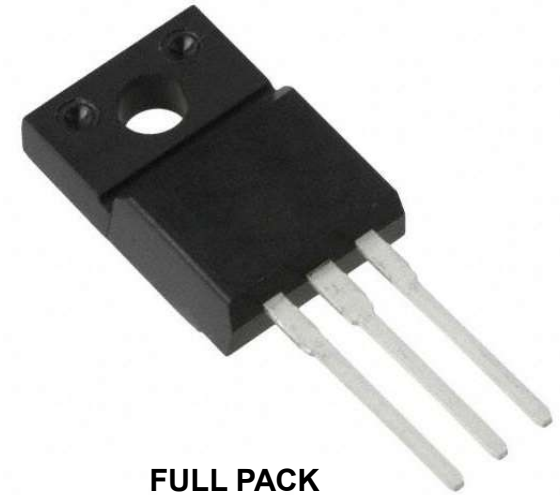


IPAK Long

Suchi Semicon Offers

Dimensions: The IPAK Long Lead package typically has a width of around 6.5 mm and a height of approximately 2.3 mm, similar to the IPAK Short Lead, but with extended lead lengths upto 7.50mm

Mounting Options: Designed for through-hole mounting, which provides robust mechanical stability.



FULL PACK

Suchi Semicon Offers

Insulated Tab: The key feature of the Full Pack package is the insulated tab, which provides electrical isolation while allowing for efficient heat dissipation.

Mounting Options: Designed for through-hole mounting, which provides robust mechanical stability.

Body Size (including metal tab):

Approximately 15.8 mm x 10 mm

Body Thickness: Around 4.7 mm

Metal Tab Thickness: Approximately 2.54 mm

Lead Length: Typically around 13.3 mm¹